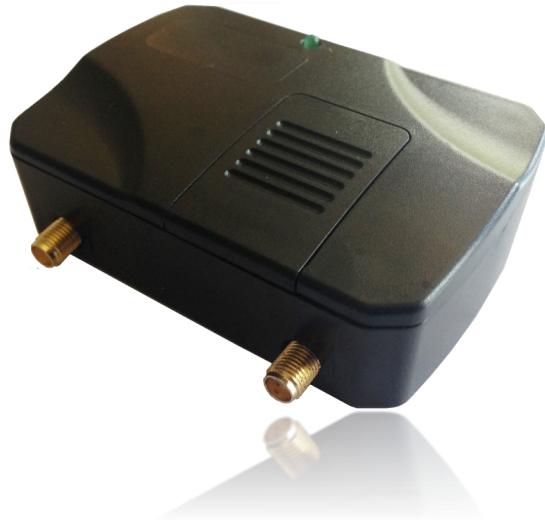


MT548 VEHICLE TRACKER



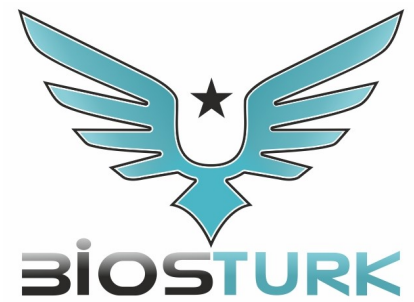
- * **High sensitivity satellite navigation**
- * **Communication via Quad band GSM**
- * **SMS, GPRS, TCP/IP, UDP**
- * **Fully customizable behavior**
- * **Autonomous operation**
- * **Car security and recovery**
- * **3D G sensor for crushing and towing alarm**
- * **Drivers behaviors logbook / history**
- * **Territory management / Geofencing**
- * **Remote administration & firmware update**
- * **Fully approved (CE, E-Mark)**
- * **Internal antennas (Optional)**
- * **Back-up battery (Optional)**



ISO
9001
QUALITY
ASSURANCE



BIOSTURK.COM



TECHNICAL SPECIFICATIONS

GSM CORE

SIM800C Quad Module
850/900/1800/1900MHz
GPRS Class 10
TCP-IP or UDP

GPS CORE

SIM28 22 Channel GPS receiver
High sensitivity MTK chipset
Protocols: NMEA, PMTK
Support: AGPS, SBAS, EASY, EPO, DGPS
Position Accuracy: 2.5m CEP
TTFF hot start: < 1 s
TTFF cold start: 31 s
Tracking sensitivity: -165dBm

PROCESSOR CORE

ARM9
Memory: 1Mb RAM, 1Mb Flash

ELECTRICAL CHARACTERISTICS

Power: +6V to +30VDC

MOTION SENSOR

3 axis motion sensor

INTERFACES

2 x I/O
1 x DO, 1 x DI
RS232
SIM card reader

TEMPERATURE RANGE

Operating: -20°C to +60°C

PHYSICAL CHARACTERISTICS

Dimensions (LxWxH): 86 x 60 x 25,3mm
Weight: 90g

ACCESSORIES

RFID Reader
Canbus interface
Panic button
Immobilizer